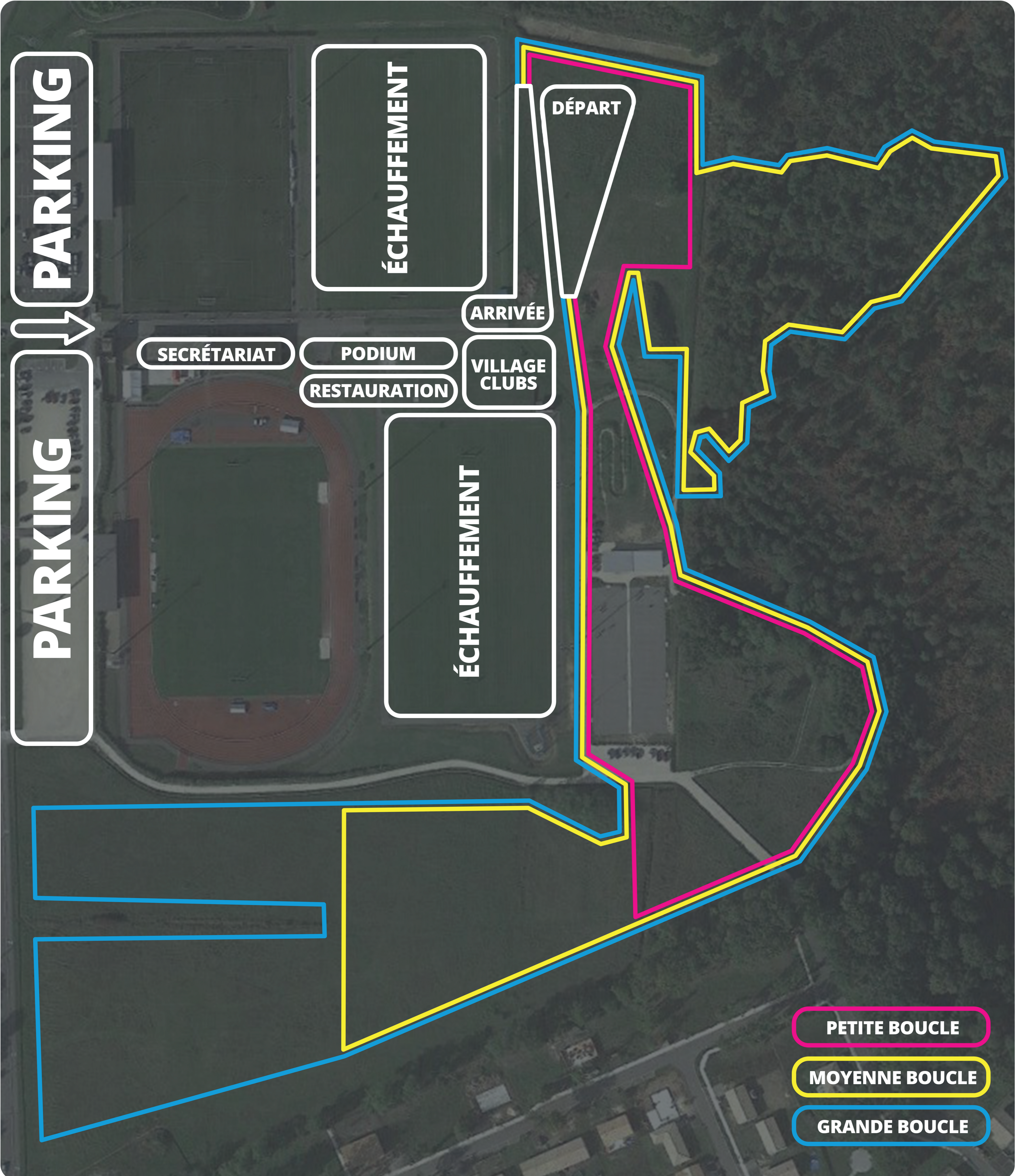
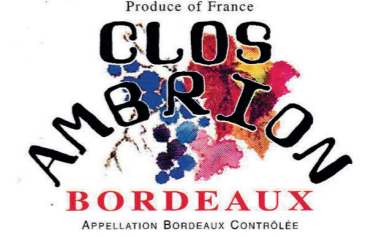


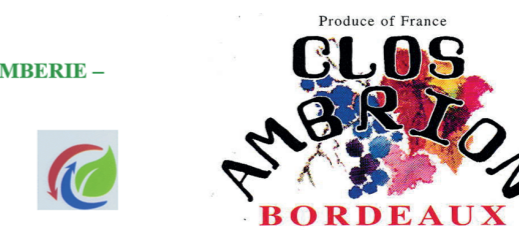
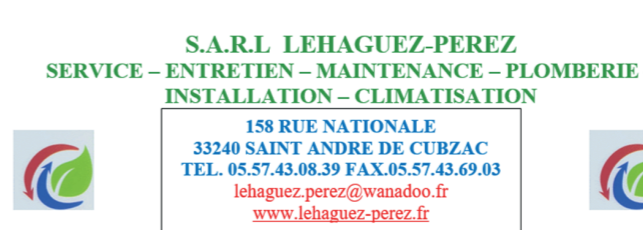
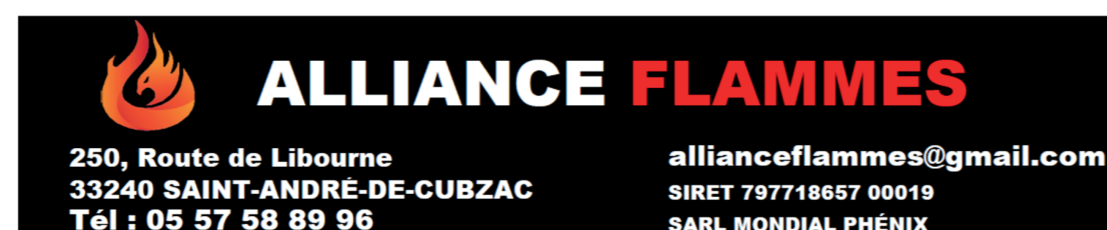


ALLIANCE FLAMMES
 250, Route de Libourne
 33240 SAINT-ANDRÉ-DE-CUBZAC
 Tél : 05 57 58 89 96
 allianceflammes@gmail.com
 SIRET 797718857 00019
 SARL MONDIAL PHENIX



S.A.R.L. LEHAGUEZ-PEREZ
 SERVICE - ENTRETIEN - MAINTENANCE - PLOMBERIE -
 INSTALLATION - CLIMATISATION
 158 RUE NATIONALE
 33240 SAINT-ANDRÉ-DE-CUBZAC
 TEL. 05.57.43.08.39 FAX. 05.57.43.69.03
 lehaguez.perez@wanadoo.fr
 www.lehaguez-perez.fr





- PETITE BOUCLE (SANS BUTTE) : 1080M
- MOYENNE BOUCLE (AVEC BUTTE) : 2050M
- GRANDE BOUCLE (AVEC BUTTE) : 2490M

C1	MASTERS HOMMES ET FEMMES M3 ET PLUS	10H30	5620M	● ● ●
C2	MASTERS HOMMES M1 M2	11H00	9520M	● ● ● ●
C3	CROSS COURT FEMMES ES (U23) SE MA	11H45	4100M	● ●
C4	CROSS COURT HOMMES ES (U23) SE MA	12H05	4100M	● ●
C5	BENJAMINS HOMMES (U14)	12H30	3130M	● ● SANS BUTTE
C6	BENJAMINES FEMMES (U14)	12H45	3130M	● ● SANS BUTTE
C7	MINIMES HOMMES (U16)	13H00	3570M	● ●
C8	MINIMES FEMMES (U16)	13H15	3180M	● ● ● SANS BUTTE
C9	CADETTES FEMMES (U18)	13H35	4210M	● ● ●
C10	CADETS HOMMES (U18)	13H55	4980M	● ●
C11	JUNIORS FEMMES (U16)	14H25	4980M	● ●
C12	JUNIORS HOMMES (U20)	14H45	6590M	● ● ●
C13	ÉLITE FEMMES ES (U23) SE MA	15H05	7470M	● ● ●
C14	ÉLITES HOMMES ES (U23) SE M0	15H40	9520M	● ● ● ●